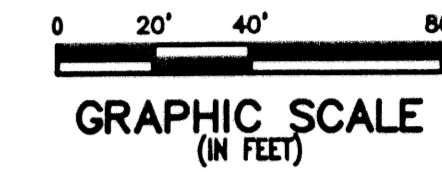
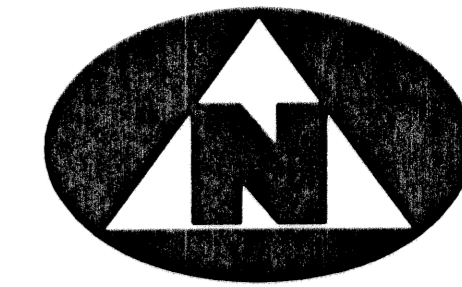


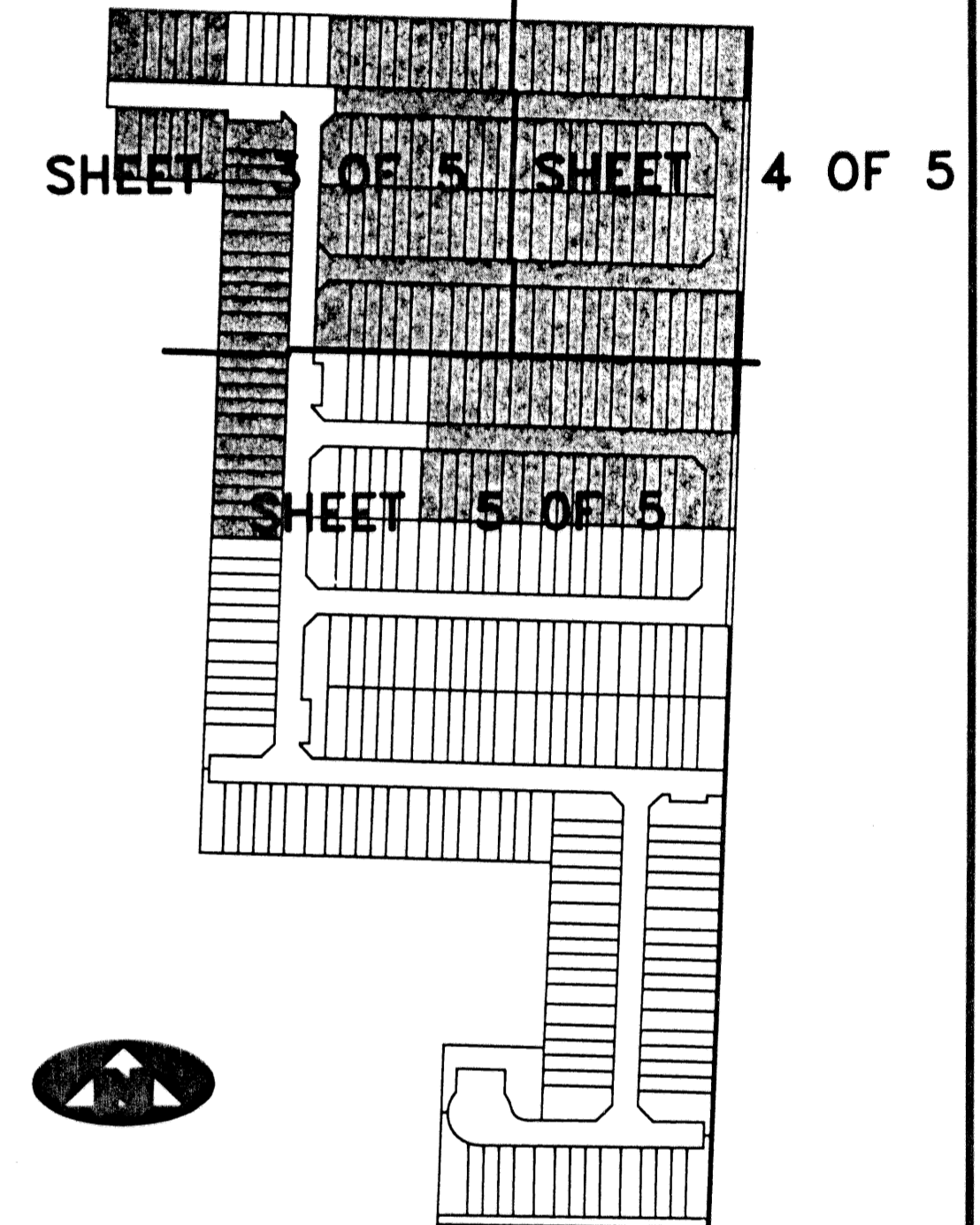
THE RENAISSANCE SECTION 4 PLAT 2

(A PART OF HAMILTON BAY/ THE RENAISSANCE RESIDENTIAL PLANNED UNIT DEVELOPMENT)
BEING A REPLAT OF PORTIONS OF SECTION 4, THE RENAISSANCE, RECORDED IN PLAT BOOK 90, PAGE 162, PUBLIC RECORDS, AND LYING IN SECTION 15, TOWNSHIP 43 SOUTH, RANGE 42 EAST, CITY OF WEST PALM BEACH, PALM BEACH COUNTY, FLORIDA

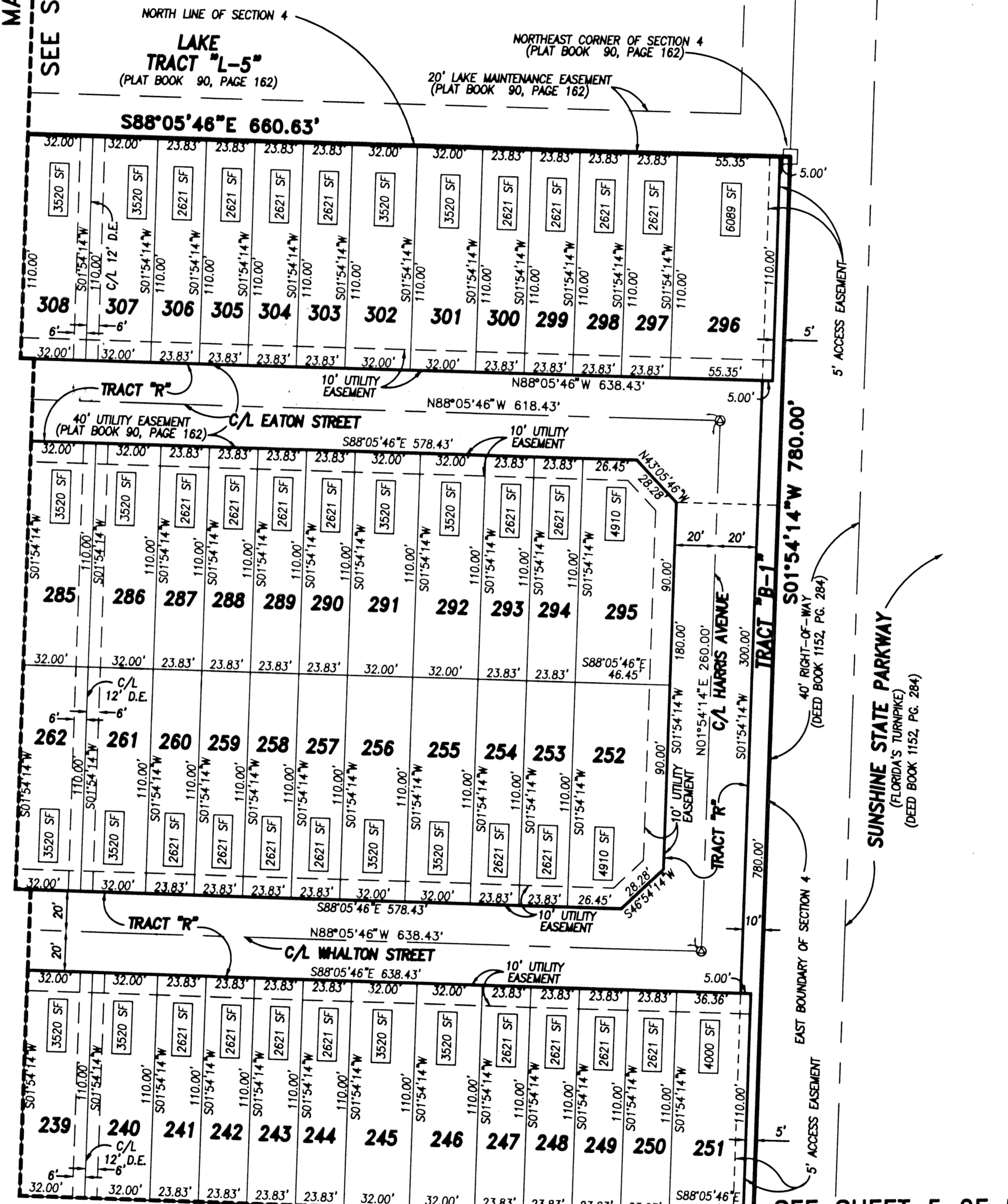


SHEET INDEX

(NOT TO SCALE)



MATCH LINE
SEE SHEET 3 OF 5



SEE SHEET 5 OF 5
MATCH LINE

LEGEND:

- C/L DENOTES A CENTERLINE
- ORB DENOTES OFFICIAL RECORDS BOOK
- PG DENOTES PAGE NUMBER
- PCP DENOTES PERMANENT CONTROL POINT
- PRM DENOTES PERMANENT REFERENCE MONUMENT
- DENOTES A SET PERMANENT REFERENCE MONUMENT (L.S. NO. 2424)
- ⊕ DENOTES A SET PERMANENT CONTROL POINT (L.S. NO. 2424)
- DENOTES A FOUND PERMANENT REFERENCE MONUMENT (L.S. NO. 2424)
- DENOTES A FOUND PERMANENT CONTROL POINT (L.S. NO. 2424)

THIS INSTRUMENT WAS PREPARED BY WM. R. VAN CAMPEN, R.L.S., IN AND FOR THE OFFICES OF BENCH MARK LAND SURVEYING & MAPPING, INC., 4152 WEST BLUE HERON BOULEVARD, SUITE 121, RIVIERA BEACH, FLORIDA

BENCH MARK LAND SURVEYING & MAPPING, INC.
 4152 W. BLUE HERON BOULEVARD • SUITE 121
 RIVIERA BEACH • FLORIDA 33404
 PHONE: (561) 848-2102 • LB. 2171 • FAX: (561) 844-9659
 EMAIL: bmlsm@aol.com WEB: http://members.aol.com/bmlsm

RECORD PLAT				
THE RENAISSANCE SECTION 4 PLAT 2				
DWN	KVC	FB	DATE	WO.#
CKD			2/6/01	P22054
FILE S4PLAT2S050.DWG			SCALE	SHEET 4 OF 5
			1"=40'	